

Arrival Guide

Arrival Port: Hong Kong International Airport

Upon arrival at the Hong Kong International Airport (HKIA), there are **two methods** to travel to Macao, and finally arrive at the official hotel (The Parisian Macao) or other partner hotels (The Venetian Macao, The Londoner Macao and Conrad Macao). You may choose a method that suits your itinerary:

1. Macau-Hong Kong Airport Direct Transfer Coach (No Entry into Hong Kong – Immigration Not Required)

This seamless transfer service allows international passengers to travel directly from HKIA to Macao without clearing Hong Kong immigration or collecting luggage.

- 1) After disembarkation from your flight at the Hong Kong International Airport, **please DO NOT go through the Hong Kong Immigration and collect your luggage from the luggage claim area.**
- 2) Directly proceed to Transfer Coach Ticketing Counters No. 38-40 at E2 in the restricted area and purchase a ticket for the “Macau Hong Kong Airport Direct Transfer” coach. (Passengers holding valid foreign travel documents are eligible for one free coach ticket. This offer does not apply to residents of Mainland China, Hong Kong, or Macao.)



- 3) The following documents are required at the ticketing counters:
 - ✓ Ticket/e-ticket/boarding pass stub of a flight arriving on the same day
 - ✓ A valid passport and any required VISA for Macao (if applicable)



- 4) If you have **checked luggage**, please show the luggage receipt issued by the airline, and a free luggage transfer service will be arranged. Your luggage will be transferred from the plane to the coach directly. Please make sure to complete the check-in procedure at least 60 minutes before the coach departure. Since the last coach will depart from the HKIA to Macao at 9:30pm, the last check-in time at Ticketing Counters No. 38-40 is before 8:30pm. Please note that only one piece of checked luggage is free, and additional luggage will be charged at HKD90.00 each.

Regular Timetable

HKIA → Macau Scheduled Departure	Scheduled Arrival Time At Macau
08:30	09:15
09:30	10:15
10:00	10:45
10:30	11:15
11:30	12:15
12:00	12:45
13:00	13:45
13:30	14:15
14:00	14:45
15:00	15:45
15:30	16:15
16:30	17:15
17:00	17:45
17:30	18:15
18:00	18:45
19:00	19:45
20:00	20:45
21:30	22:15

Fare Table

SkyPier Terminal → Hong Kong-Zhuhai-Macau Bridge (Macau Port)	
Macanese Pataca Regular Fare	Adult: 280 Senior: 210 Child: 210
Note	<ol style="list-style-type: none"> Children under two years old will charge HKD/MOP \$30. Child: 2 - 12 years old; Senior: 65 years old or above Passengers may book up to 30 days from bus departure date Fare price is inclusive of 1 piece baggage Additional baggage will be charged HK/MOP \$90 per piece

Contact information of Service Provider MACAU HK AIRPORT DIRECT

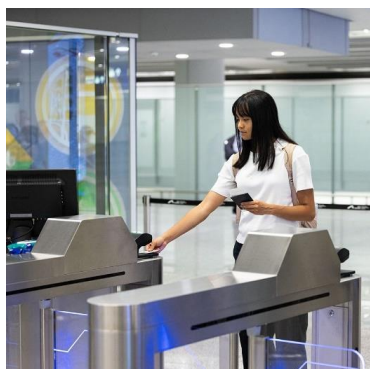
Website : www.macauhkairportbus.com

Telephone Enquiry (Hong Kong) : +852 3193 9188

Telephone Enquiry (Macao) : +853 6567 0900

Email : cs@macauhkairportbus.com

5) Proceed to the Hong Kong International Airport Automated People Mover (APM) and travel to the **SkyPier** (around 2 minutes).



- 6) Collect all your luggage at the **SkyPier** luggage claim area and board the coach. The travel time from HKIA to **HZMB Macao Port** is about 60 minutes.



- 7) When the coach arrives at the Hong Kong-Zhuhai-Macau Bridge (Macao Port), also known as **HZMB Macao Port**, disembark and collect all your luggage from the coach. Enter the **HZMB Macao Port Arrival Hall** and complete the Macao entry procedures.



- 8) Upon entry into Macao, follow the signs for "**Casino Shuttle**" or "**Hotel Free Shuttle Bus**" and board the **complimentary shuttles** to the official hotel (The Parisian Macao) or other partner hotels (The Venetian Macao, The Londoner Macao and Conrad Macao).



9) Shuttle service schedule as below:

The Parisian Macao B1 Bus Depot			
Shuttle bus pick up/drop off location	From Parisian	To Parisian	Frequency
HZMB Macao Port	10:30 – 21:00	10:00 – 21:00	12 – 15 minutes

The Venetian Macao Hotel West Lobby			
Shuttle Bus pick up/drop off location	From Venetian	To Venetian	Frequency
HZMB Macao Port	10:30 - 21:00	10:00 - 21:00	13 - 15 minutes

Londoner East Lobby			
Shuttle bus pick up/drop off location	From Londoner	To Londoner	Frequency
HZMB Macao Port	10:35 – 21:05	10:00 – 21:00	15 – 18 minutes

For more pick up/drop off points, please visit the official hotel (The Parisian) website:
<https://www.parisianmacao.com/about-us/getting-here.html>

2. Hong Kong Zhuhai Macao Bridge Shuttle Bus (HZMB Shuttle Bus / Golden Bus)

(Entry into Hong Kong – Complete Immigration Clearance to Enter Hong Kong)

This method is suitable for passengers who choose to enter Hong Kong first, and then travel to Macao. Upon arrival at the HKIA, they have to complete immigration clearance to enter Hong Kong before traveling to Macao.

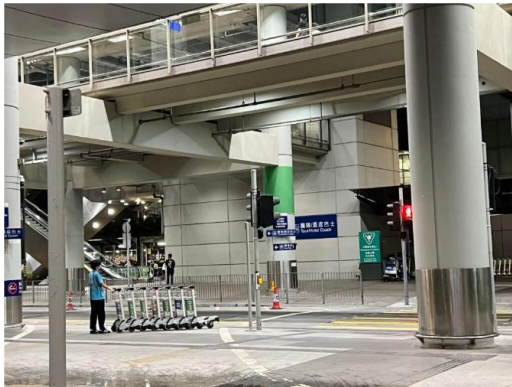
- 1) After disembarkation from your flight at the HKIA, complete Hong Kong immigration clearance, collect your luggage from the luggage claim area, and enter Hong Kong.



- 2) At the Arrivals Hall, follow signs for "Bus" and find the **Route B4** bus stop (NEW LANTAO BUS).

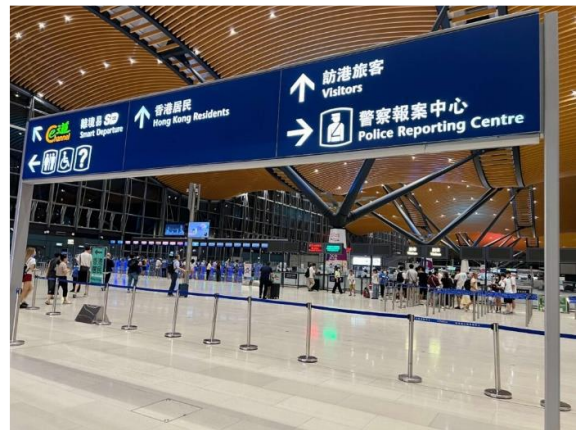


- 3) Follow signs for "Bus" to exit the terminal, walk to **B4 Bus stop** and take B4 Bus to the **HZMB Hong Kong Port**. Bus fare is HKD9.80 (HKD Cash, Octopus card and Transit QR Code of Alipay or UnionPay or WeChat Pay are accepted). The travel time is approximately 10 - 15 minutes.



時間表 Timetable		
B4	大橋香港口岸開出 From HZMB Hong Kong Port	班次(分鐘) Headway (mins)
	每日 Daily	
	06:00 - 00:00	15
	00:00 - 01:00	30
	01:00 - 05:00	60
	05:00 - 06:00	30
時間表僅供乘客參考之用 This timetable is published as a guide to the general level of service		

- 4) When you arrive at the HZMB Hong Kong Port, enter the Departure Hall, follow the signs for "To Zhuhai and Macao" and pass through immigration to exit Hong Kong.



- 5) Purchase the **HZMB Shuttle Bus ("Golden Bus")** ticket (choose **Macao** as destination) at the kiosks or ticket office. Bus fare of a one-way ticket for adult is HKD65.00 (HKD, MOP and RMB cash, Octopus card, WeChat Pay, Alipay, UnionPay, BOC Pay, MPay, credit cards including Visa, Mastercard and UnionPay are accepted).



- 6) Follow the signs for "**Macao Port**" to exit the building and proceed to the **HZMB Shuttle Bus** ("**Golden Bus**") area and board the bus. The travel time is approximately 40 - 45 minutes.



HZMB Shuttle bus operate 24 hours

- Peak hours (06:00-23:59): every 5 minutes
- Off peak hours (06:00-23:59): every 10 to 15 minutes
- Late night period (00:00-05:59): every 15 to 30 minutes

Fare Table (HKD)

Hong Kong to Macau			
Standard Fare		Discounted Fare	
Daytime	Nighttime	Daytime	Nighttime
65	70	33	35

*One checked luggage is free. Any luggage exceeding the free standard will be charged HKD/MOP 33.00 per piece

- 7) After arriving at the **HZMB Macao Port**, disembark and collect all your luggage from the bus, enter the **HZMB Macau Port Arrival Hall** and complete the Macao entry procedures.



- 8) Upon entry into Macao, follow the signs for "**Casino Shuttle**" or "**Hotel Free Shuttle Bus**" and board the **complimentary shuttles** to the official hotel (The Parisian Macao) or other partner hotels (The Venetian Macao, The Londoner Macao and Conrad Macao).



9) Shuttle service schedule as below:

The Parisian Macao B1 Bus Depot			
Shuttle bus pick up/drop off location	From Parisian	To Parisian	Frequency
HZMB Macao Port	10:30 – 21:00	10:00 – 21:00	12 – 15 minutes

The Venetian Macao Hotel West Lobby			
Shuttle Bus pick up/drop off location	From Venetian	To Venetian	Frequency
HZMB Macao Port	10:30 - 21:00	10:00 - 21:00	13 - 15 minutes

Londoner East Lobby			
Shuttle bus pick up/drop off location	From Londoner	To Londoner	Frequency
HZMB Macao Port	10:35 – 21:05	10:00 – 21:00	15 – 18 minutes

For more pick up/drop off points, please visit the official hotel (The Parisian) website:
<https://www.parisianmacao.com/about-us/getting-here.html>

Arrival Port: Macao International Airport

Upon arrival at the **Macao International Airport**, complete the immigration clearance to enter Macao. The most convenient way to reach the **official hotel** (The Parisian Macao) or other **partner hotels** (The Venetian Macao, The Londoner Macao and Conrad Macao) is to take the **complimentary shuttles**.

- 1) After disembarkation, proceed to Macao Immigration for entry clearance, collect your checked luggage from the baggage claim area, pass through Macao Customs to enter the Macao.
- 2) Upon entry in Macao, proceed to the North Exit of the terminal, and walk to the designated pickup/drop-off area in the adjacent parking zone. Board the **complimentary shuttles** to the official hotel (The Parisian Macao) or other partner hotels (The Venetian Macao, The Londoner Macao and Conrad Macao).



- 3) Shuttle service schedule as below:

The Parisian Macao Hotel Main Lobby			
Shuttle bus pick up/drop off location	From Parisian	To Parisian	Frequency
Macao International Airport	09:05 – 23:05	09:00 – 23:00	12 – 20 minutes

The Venetian Macao Hotel West Lobby			
Shuttle Bus pick up/drop off location	From Venetian	To Venetian	Frequency
Macao International Airport	09:00 - 23:00	09:00 - 23:00	12 - 15 minutes

Shoppes at Londoner			
Shuttle bus pick up/drop off location	From Londoner	To Londoner	Frequency
Macao International Airport	09:00 – 23:00	09:00 – 23:00	12 – 20 minutes

For more pick up/drop off points, please visit the official hotel (The Parisian) website: <https://www.parisianmacao.com/about-us/getting-here.html>

Arrival Port: Outer Harbour Ferry Terminal / Taipa Ferry Terminal

Upon arrival at either the **Outer Harbour Ferry Terminal** or **Taipa Ferry Terminal**, complete the immigration clearance to enter Macao. The most convenient way to reach the **official hotel** (The Parisian Macao) or other **partner hotels** (The Venetian Macao, The Londoner Macao and Conrad Macao) is to take the **complimentary hotel shuttles**.

- 1) After disembarkation from the ferry, follow signs to Macao Immigration for entry clearance, no customs inspection for carry-on luggage unless carrying dutiable or restricted goods.
- 2) Upon entry in Macao, proceed to the designated hotel shuttle pickup area outside the terminal. Board the **complimentary shuttles** to the official hotel (The Parisian Macao) or other partner hotels (The Venetian Macao, The Londoner Macao and Conrad Macao).



- 3) Shuttle service schedule and pick up/drop off points for passengers arriving at Outer Harbour Ferry Terminal and Taipa Ferry Terminal as below:

The Parisian Macao B1 Bus Depot			
Shuttle bus pick up/drop off location	From Parisian	To Parisian	Frequency
Macao Ferry Terminal	11:45 – 19:45	11:00 – 19:00	23 – 25 minutes
Taipa Ferry Terminal	08:15 – 23:35	08:45 – 23:59	13 – 15 minutes 10 – 12 minutes (10:30 - 16:00)

The Venetian Macao Hotel West Lobby			
Shuttle Bus pick up/drop off location	From Venetian	To Venetian	Frequency
Macao Ferry Terminal	11:40 - 19:40	11:00 - 19:00	23 - 25 minutes

The Venetian Macao Hotel Main Lobby			
Shuttle Bus pick up/drop off location	From Venetian	To Venetian	Frequency
Taipa Ferry Terminal	08:10 - 23:35	08:45 - 23:59	15 - 18 minutes 12 - 15 minutes (10:30 - 21:30)

Londoner East Lobby			
Shuttle bus pick up/drop off location	From Londoner	To Londoner	Frequency
Macao Ferry Terminal	11:30 – 19:30	-	23 – 25 Minutes

Londoner Grand South Lobby			
Shuttle bus pick up/drop off location	From Londoner Grand	To Londoner Grand	Frequency
Macao Ferry Terminal	-	11:00 – 19:00	23 – 25 Minutes

Shoppes at Londoner			
Shuttle bus pick up/drop off location	From Londoner	To Londoner	Frequency
Taipa Ferry Terminal	08:10 – 23:30	08:45 – 23:59	15 – 18 minutes/ 10 – 12 minutes (10:30 - 16:00)

For more pick up/drop off points, please visit the official hotel (The Parisian) website:
<https://www.parisianmacao.com/about-us/getting-here.html>